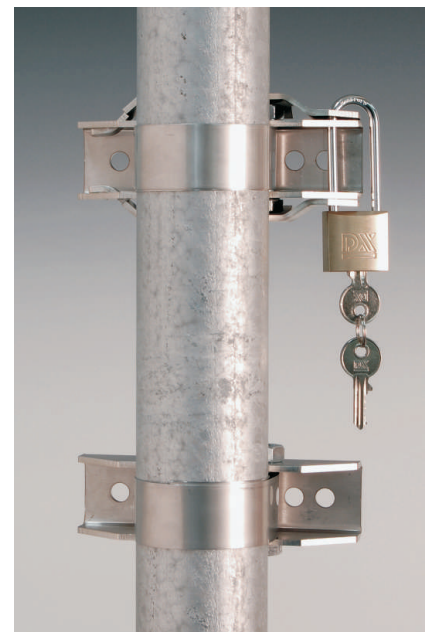
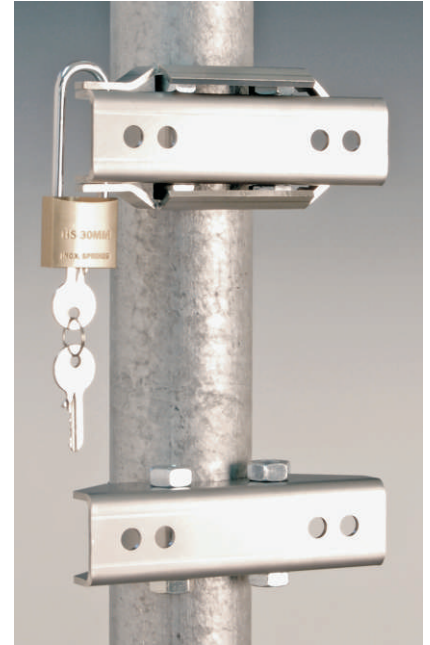
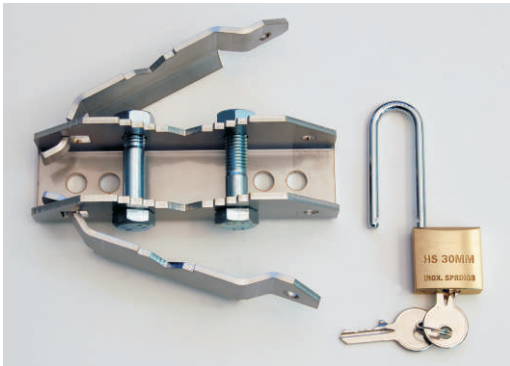
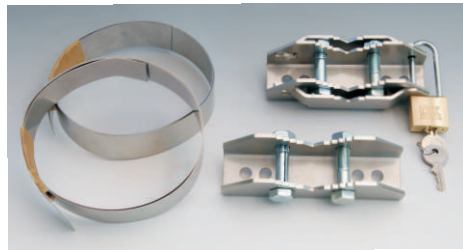




V2A-Clamps

wavetec mast clamps in stainless steel (1pair)

- › theft-proof fixing for wavetec systems and quick mounting devices
- › 1 meter steel band per clamp
- › for poles from 40 to 250 mm diameter
- › lockable
- › special padlock
- › complete stainless steel



Application

Our V2A-clamp largely allows a theft-proof fixing for **wavetec** systems and quick mounting devices

- › For fixing at poles and lanterns
- › prevention of dismantling by simple faceplate for the mounting screws
- › easy fixing of the faceplates
- › flexible steel bands für poles with a diameter from 40 to 250 mm
- › Special padlock to protect the faceplates