



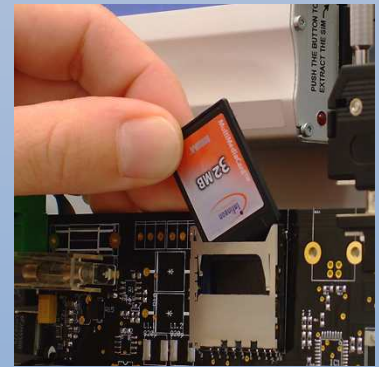
Data evaluation

for wavetec Speed Displays

A wavetec Speed Display is not only indicating speed but with a **memory module** it is able to store this data and gives you the possibility to use the measured traffic data for extensive traffic data evaluation.

The memory module contains a **MMC-SD Card with >= 128 MByte** (FAT 16-formatted). That means a memory capacity of more than 25 million individual vehicle-data-sheets. Served are date, time, incoming and outgoing speed of each individual data sheet.

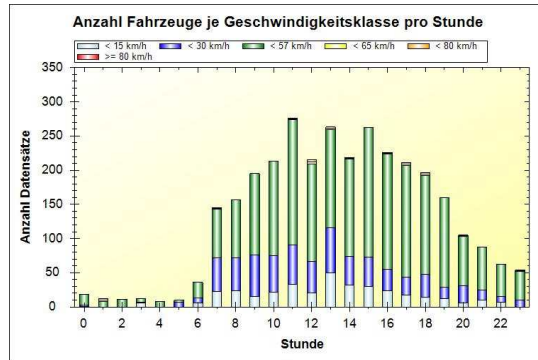
With the help of our particularly developed software "User Assistant" you can prepare these data in a simple way and you can make it usable for your projects, e.g. traffic analyses, citizen desiring etc.



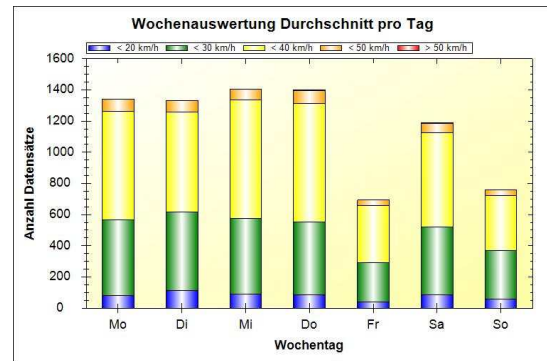
intern
Data storage unit

Examples:

number of records
per speed
per hour (24 h)

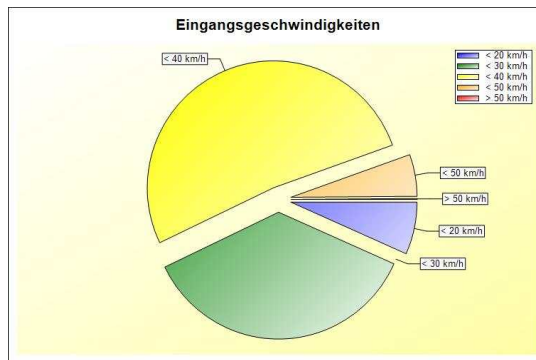


extern
Data storage unit



< Graph representation:
evaluation weeks
on average per
Day depending on speed

number of records
per speed range
in percent



	Mo	Di	Mi	Do	Fr	Sa	So	#
< 20 km/h	81	112	88	86	38	86	59	550
< 30 km/h	486	503	489	465	252	436	308	2939
< 40 km/h	696	644	760	762	367	605	353	4187
< 50 km/h	78	72	66	84	36	60	38	434
> 50 km/h	1	2	1	3	0	3	0	10
#	1342	1333	1404	1400	693	1190	758	8120

< Tabular representation:
evaluation weeks
on average per day per
speed